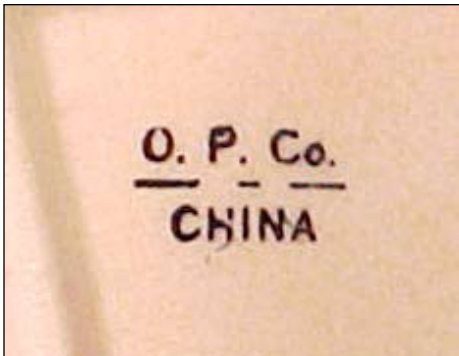


SYRACUSE CHINA

Syracuse, New York

Return to Syracuse China IDwiki:

<http://www.restaurantwarecollectors.com/forums/showthread.php?t=7333>



O.P.CO.: 1885 - 1890



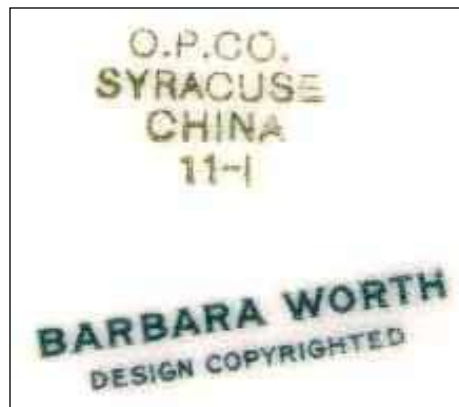
O.P.CO.: 1897-1946
With number 93 in circle: 1911



O.P.CO.: 1897-1946
With number 13 in circle: 1904



With number in diamond: ~ 1912 to 1919. This one, with an impressed 40, would date to 1915.



O.P.CO.: 1897-1946
With date code: 1925



O.P.CO.: 1897-1946
With date code: 1925



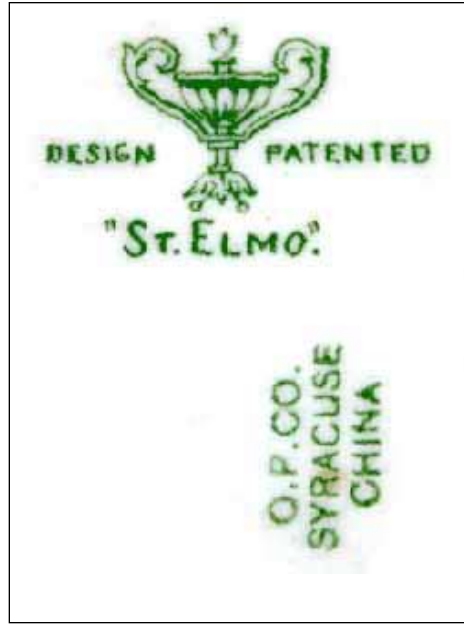
O.P.CO.: 1897-1946
With date code: 1926



O.P.CO.: 1897-1946
With date code: 1945



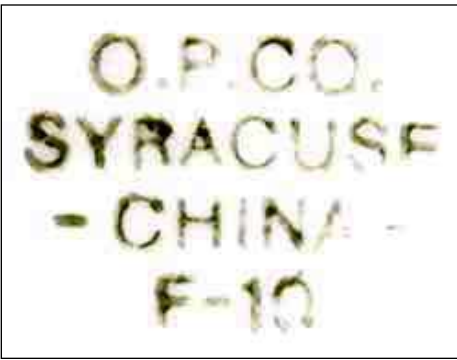
O.P.CO.: 1897-1946



O.P.CO.: 1897-1946



O.P.CO.: 1897-1946
With date code: 1937



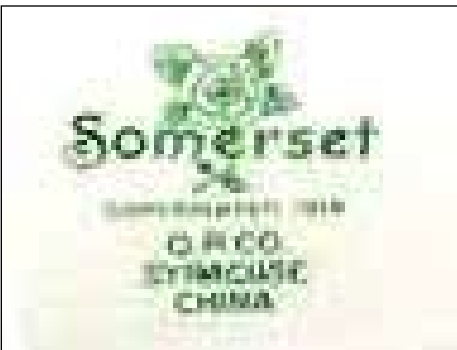
O.P.CO.: 1897-1946
With date code: 1925



O.P.CO.: 1897-1946
With date code: 1945



O.P.CO.: 1897-1946
With date code: 1942



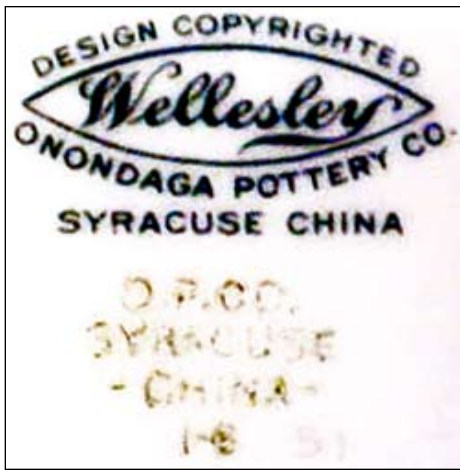
O.P.CO.: 1897-1946



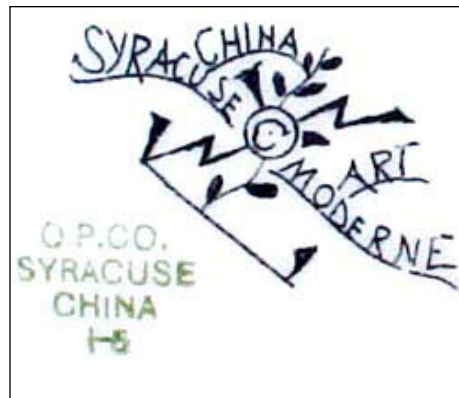
O.P.CO.: 1897-1946



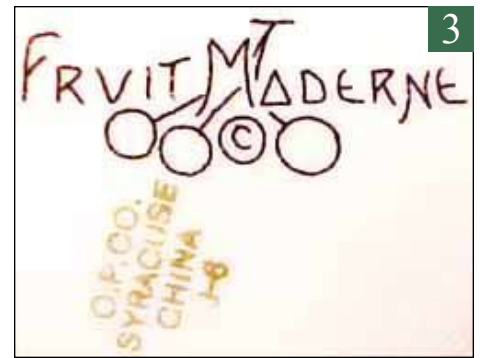
O.P.CO.: 1897-1946
With date code: 1923



O.P.CO.: 1897-1946
With date code: 1943

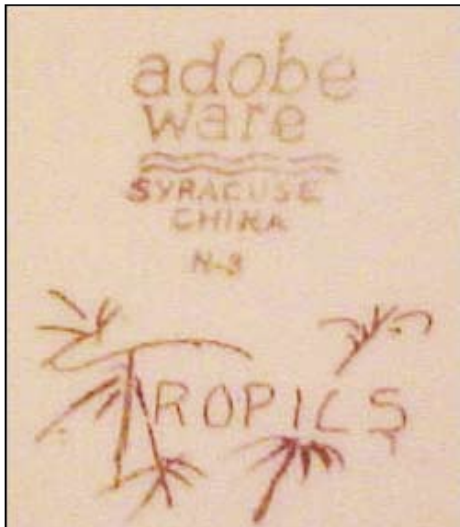


O.P.CO.: 1897-1946
With date code: 1928
Art Moderne

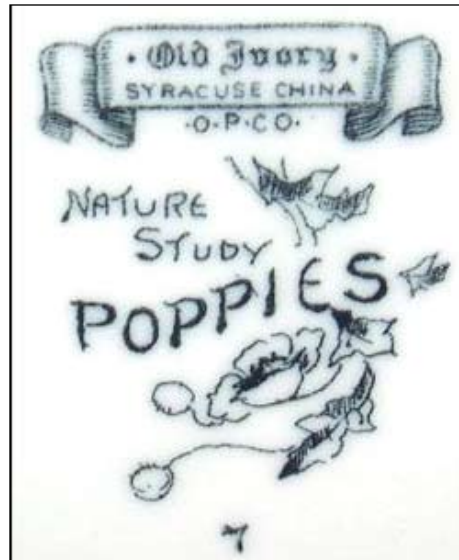


3

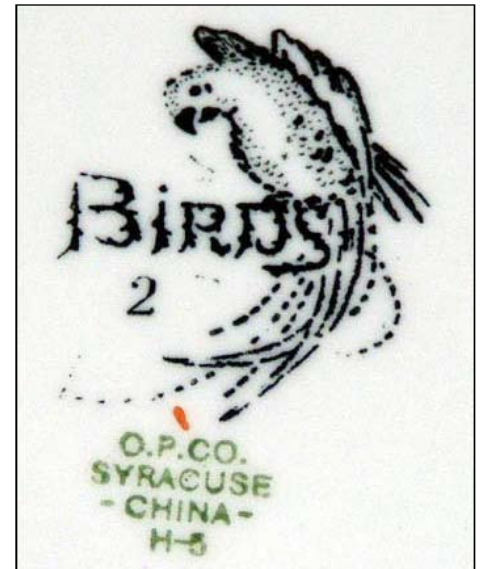
O.P.CO.: 1897-1946
With date code: 1929
Fruit Moderne



Tan body
Adobe Ware: 1932 - 1972
with date code: 1933
Tropics



Old Ivory: 1927 - 1950s
Nature Studies: Poppies
Hand-painted,
designed by Harry Aitken



O.P.CO.: 1897-1946
Nature Studies: Birds
Hand-painted,
designed by Harry Aitken
With date code, 1927



Old Ivory describes the ivory-colored clay body
1927 - 1950s
usually includes no date code



Old Ivory describes the ivory-colored clay body
1927 - 1950s
usually includes no date code



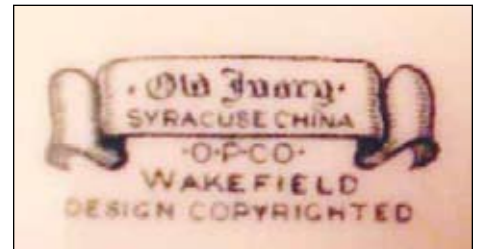
Old Ivory describes the ivory-colored clay body
1927 - 1950s
usually includes no date code



Old Ivory describes the ivory-colored clay body
1927 - 1950s
usually includes no date code



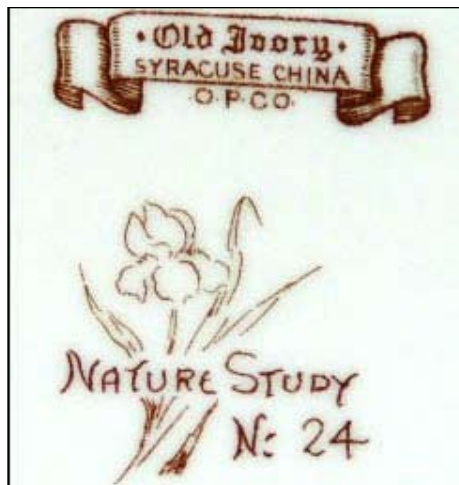
Old Ivory describes the ivory-colored clay body
1927 - 1950s
usually includes no date code



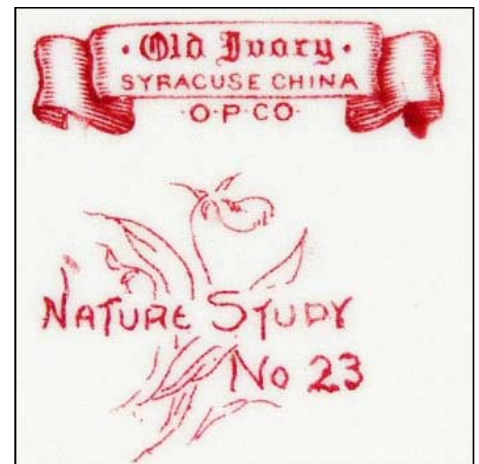
Old Ivory describes the ivory-colored clay body
1927 - 1950s
usually includes no date code



Old Ivory describes the ivory-colored clay body
1927 - 1950s
usually includes no date code



Old Ivory: 1927 - 1950s
Nature Studies
Hand-painted,
designed by Harry Aitken



Old Ivory: 1927 - 1950s
Nature Studies
Hand-painted,
designed by Harry Aitken



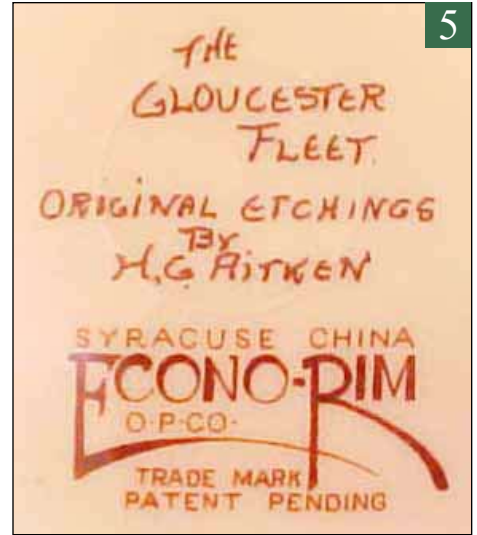
1933-1967

Designed with narrow rim for use by railroads, among others



1933-1967

Designed with narrow rim for use by railroads, among others



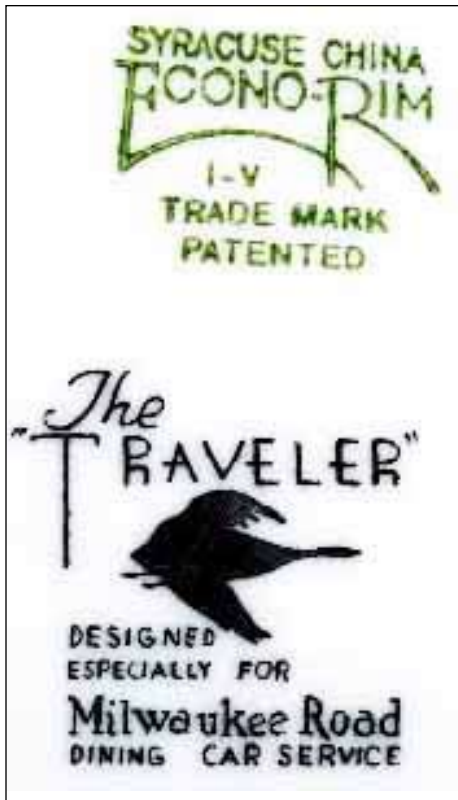
1933-1967

Designed with narrow rim for use by railroads, among others



1933-1967

Designed with narrow rim for use by railroads, among others
With date code, 1935



1933-1967

Designed with narrow rim for use by railroads, among others
With date code, 1941



1946-1962 also 1965-1974
with date code: 1957



1946-1962 also 1965-1974
with date code: 1952



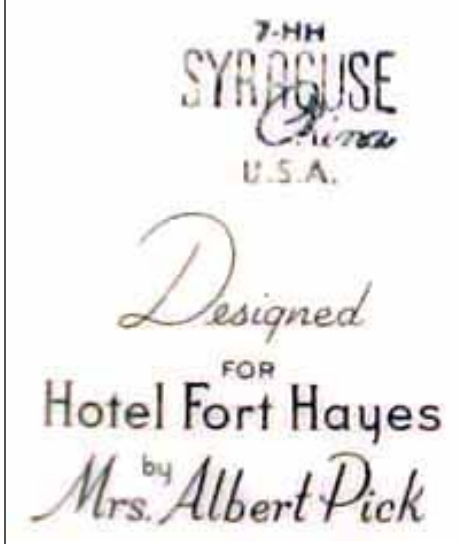
1946-1962 also 1965-1974
(date code unreadable)



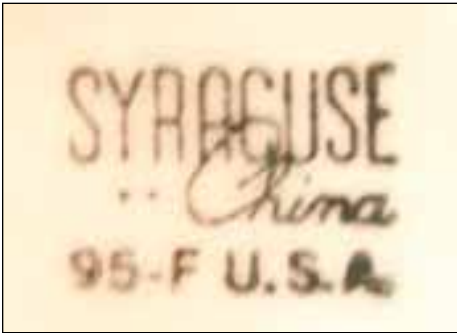
1962-1965
(with date code: 1962)



1946-1962 also 1965-1974
(with date code: 1947)



1946-1962 also 1965-1974
(with date code: 1953)



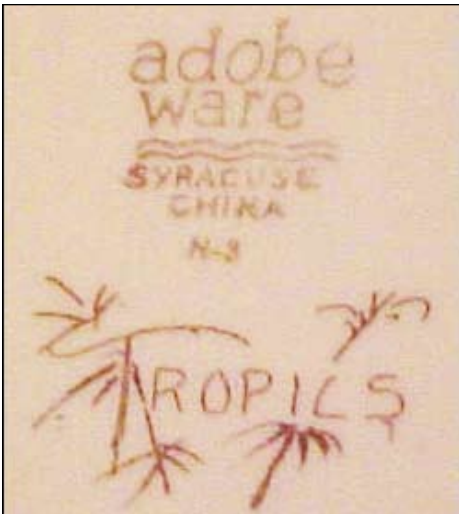
1946-1962 also 1965-1974
(with date code: 1966)



1962-1965
(with date code: 1965)



1946-1962 also 1965-1974
?????????



Tan body
Adobe Ware: 1932 - 1972
with date code: 1933



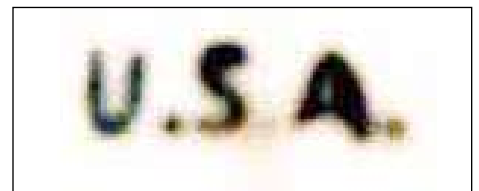
Tan body
Adobe Ware: 1932 - 1972
with date code: 1946



1961-1962
with date code: 1962



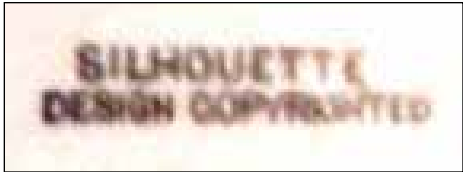
Nature Studies
2008



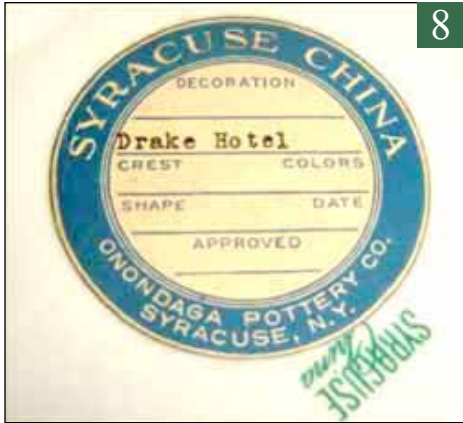
?????



1991



1929
ordered for Milwaukee Road RR



Drake Hotel
date unknown



1993-1997



2009
This is literally the last datecode for ware made by Syracuse in the United States.



1890-1893
This is one of Syracuse China's oldest backstamps and was found on a Knight's Templar plate.