

BUFFALO CHINA

Buffalo, New York

Return to Buffalo China IDwiki:

<http://www.restaurantwarecollectors.com/forums/showthread.php?t=7374>



FAKE/FANTASY BACKSTAMP



Bonrea Pattern - 1907
Not usually considered RW



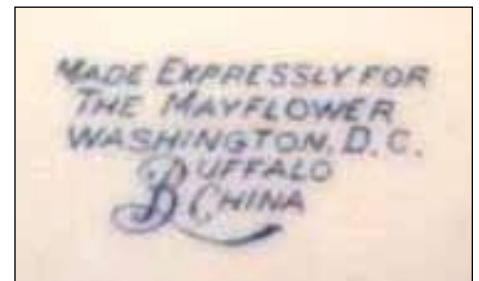
Roycroft Inn Pattern
Circa 1905 - Circa 1916
Not usually considered RW



The Plaza Hotel, New York
1919



Prince Pattern
1922



The Mayflower
Washington, DC
1930s



Bluebonnet Pattern
Missouri, Kansas & Texas Railroad
(MKT or Katy)
Mid-1930s - Late 1940s



Indian Tree Pattern
New York New Haven & Hartford
Railroad
1915 - 1940s



New York Central Lines



Northeastern Lunch
Montreal, Canada
1925



Marian Pattern
1925



1926



Plymouth Pattern
1927



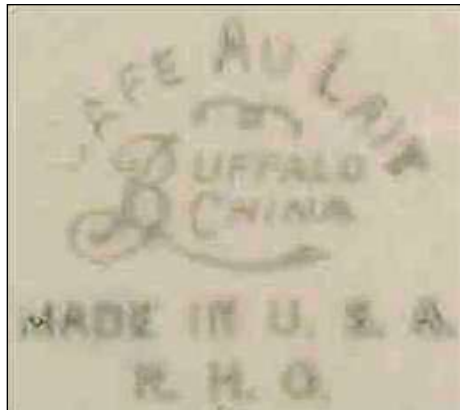
1927



Bismarck Hotel, Chicago, IL
1926 - 1931



Multifleure
Late 1920s-1930s



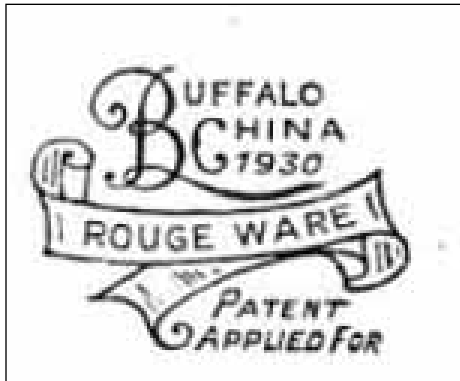
Café Au Lait Ware
Late 1920s-1930s



Deco Restaurants
Café Au Lait Ware
Circa 1940s



Cairo Pattern – Lune Ware
1929



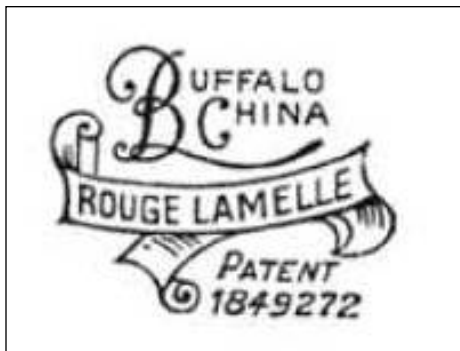
Late 1920s-1930s
Rose-beige color



Late 1920s-1930s
solid "olde Parchment" yellow



Late 1920s-1930s
periwinkle blue laminated color,
usually on white or ivory



Late 1920s-1930s
rose-beige laminated color, usually
on white or ivory



Late 1920s-1930s
"Olde Parchment" yellow laminated
color, usually on white or ivory



Lune Lamelle Ware
The Biltmore, Los Angeles, CA
1930s



The Biltmore
1915 - 1940s



The Commodore, New York
1915 - 1940s



Savarin Pattern
1927



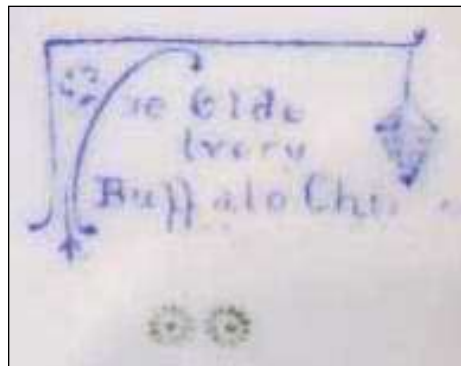
Dominion Pattern
Circa 1930s



1915 - 1940s



1915 - 1940s



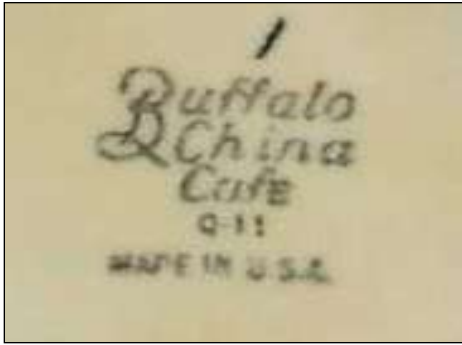
Ye Olde Ivory
1929 - early 1940s



Ye Olde Ivory
1929 - early 1940s



The Ahwanhee
Yosemite Park, CA
1929 - early 1940s



Cafe Ware
1940s - Early 1960s



Lune Ware
1940s - Early 1960s



Rouge Ware
1940s - Early 1960s



Raised Buffalo Backstamp
Late 1950s - Circa 1980s



1979



Late 1970s - Circa 1980s



Early 1980s



1980s - Present



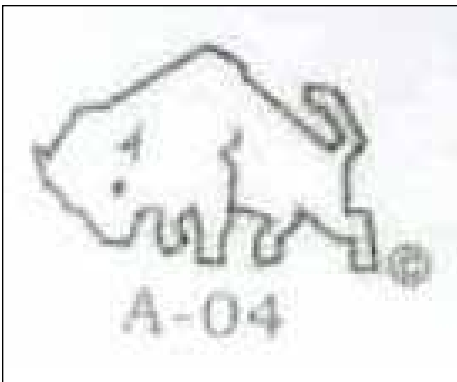
1980s - Present



1980s - Present



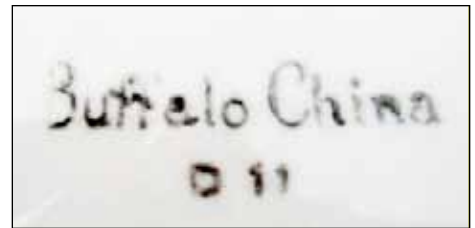
1980s - Present



January 2004



Multifleure Lamelle
Late 1920s-1930s



Early 1940s - mid-1940s



1929 - early 1940s